



Client Group for the interRAI Home Care Assessment Instrument

Client Group definitions

Acute: A person who needs immediate or urgent time-limited (up to 3 months) intervention to improve or stabilize a medical or post-surgical condition.

End-of-life: In one's best clinical judgment, the person has an end-stage disease and is expected to live less than 6 months. Judgment should be substantiated by a well-documented disease diagnosis and deteriorating clinical course.

Rehabilitation: A person with a stable health condition that is expected to improve with a time-limited focus on goal-oriented, functional rehabilitation. The rehabilitation plan specifies goals and expected duration of therapy.

Long-term supportive: A person who is at significant risk of institutionalization due to unstable chronic health conditions and/or living conditions and/or personal resources.

Maintenance: A person with stable chronic health conditions, stable living conditions and stable personal resources who needs ongoing support to remain living at home.

Assessment only, no other home care services: A person who is assessed by the home care program (e.g., for residential care placement) but will not be receiving any other home care services.

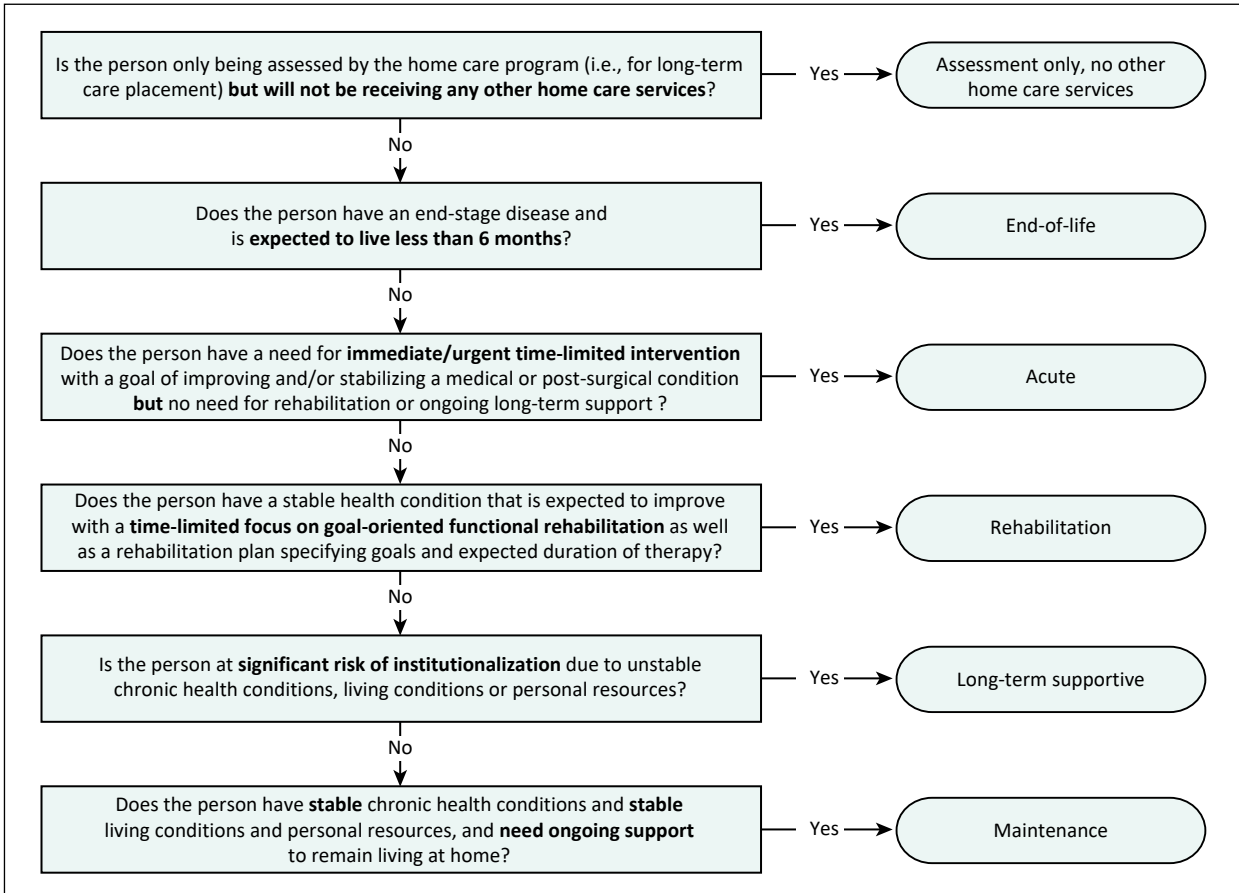
Principles for assigning a Client Group

The principles listed below are used as guidelines for assigning a Client Group. Assessors must use clinical judgment and available assessment information to complete the assignment at the time of the initial assessment and again at the time of reassessment.

1. A person is assigned to a Client Group based on their assessed needs, including their current health status (health condition, personal resources, living conditions), rather than on the services available or provided.
2. The assigned Client Group should reflect the health status and primary goals of care set for the person at the time of assessment.
3. The End-of-life Client Group takes precedence over all other categories.
4. A person may belong to only 1 Client Group at a time.



Decision tree



Text alternative for image

The decision process to assign a Client Group is as follows. First, determine whether the person will be receiving an assessment only, and no other home care services. If yes, then assign the Assessment only Client Group. If no, then determine whether death is anticipated within 6 months. If yes, then assign the End-of-life Client Group. If no, then determine whether the person has a primary need for immediate or urgent time-limited intervention, with a goal to improve and or stabilize a medical or a post-surgical condition but does not need rehabilitation or ongoing support to remain in the community. If this is the case, then assign the Acute Client Group. If it is not the case, then determine whether the person has a stable health condition that is expected to improve with a time-limited focus on goal-oriented, functional rehabilitation. If yes, then assign the Rehabilitation Client Group. If no, then determine whether there is a significant risk for institutionalization due to unstable chronic health conditions, living conditions or personal resources. If yes, then assign the Long-term supportive care Client Group. If no, then assign the Maintenance Client Group.



specializedcare@cihi.ca

interRAI HC © interRAI Corporation, Washington, D.C., 1994–2012. Modified with permission for Canadian use under licence to the Canadian Institute for Health Information. Canadianized items and their descriptions © Canadian Institute for Health Information, 2021.

© 2021 Canadian Institute for Health Information

How to cite this document:

Canadian Institute for Health Information. *Client Group for the interRAI Home Care Assessment Instrument [job aid]*. Ottawa, ON: CIHI; 2021.